

Porchester Junior School



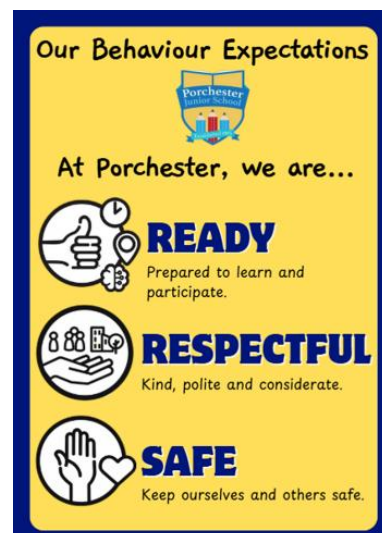
Anti-Bullying Policy

Adopted- August 2025
Review- August 2026

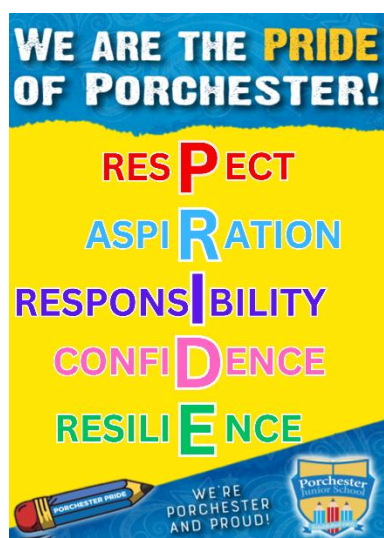
To promote positive relationships and behaviour at Porchester, everyone in our school community – children and adults – focus on three clear rules to create a nurturing, supportive, and successful learning environment:

- **Ready** – Be prepared to learn and participate.
- **Respectful** – Be kind, polite and considerate.
- **Safe** – Keep yourself and others safe.

These rules apply to everyone, children and adults, and help us to create a positive environment where every child can feel valued and succeed.



Our behaviour expectations align with our school values and serve as a foundation for fostering a positive school culture. Each interaction with children is guided by these principles, helping to create a space where all children feel safe, supported and ready to succeed.



Our PRIDE values run through our school like a golden thread. These values are embedded within our curriculum design and our day-to-day school life and experiences.

Our PRIDE values help our children to achieve and aspire. They help to shape our children into future citizens of our world. Our Pupil Leadership Teams and staff have created our value expectations for the behaviours we expect for each value.

As a result of our values we aim to provide a safe, caring and friendly environment for learning for all our pupils to allow them to improve their life chances and maximise their potential.

We expect our pupils to act safely and feel safe in and outside of school – we do not tolerate any form of bullying and we are committed to preventing and tackling it. We recognise that as children learn and grow together, they may experience fallouts with their peers, but we are committed to supporting our pupils to resolve these ‘relational conflicts’ and stop them from progressing to bullying behaviours. If an incident of bullying does occur, we believe our pupils, parents/carers and staff should feel confident in reporting it and know that all incidents will be dealt with promptly and effectively. Bullying will never be tolerated at our school.

At Porchester, we encourage open discussions around differences between people, we actively challenge prejudice, and we celebrate diversity. We adopt a contextual safeguarding, trauma-informed and strengths-based approach to bullying and child-on-child abuse, and we are committed to working with families and outside agencies where appropriate.

Policy Development

This policy has been developed to reflect the most recent Keeping Children Safe in Education (KCSiE) Statutory Guidance (1 September 2025) and was formulated in consultation with the whole school community with input from: staff and Governors.

This policy is available:

- Online on the school website
- From the school office

This policy is reviewed and evaluated throughout the academic year. It is updated annually.

Roles and responsibilities

All staff at our school are aware that children may bully other children, and that this can happen both inside and outside of school, and online. All staff understand the school's Anti-Bullying strategy and approach and know the important role that they each have in preventing and tackling bullying.

The Head teacher (Vicki Welsby) has overall responsibility for Anti-Bullying at our school. They are responsible for appointing an Anti-Bullying Coordinator and liaising with the Governing body, parents/carers, the Local Authority, and outside agencies when appropriate.

The Anti-Bullying Coordinator (Gemma Rolley) is responsible for:

- Policy development and review (ensuring that pupils, staff, governors, and parents/carers have opportunities to contribute)
- Implementing the policy and monitoring/assessing its effectiveness
- Coordinating Anti-Bullying training and support for staff and parents/carers where appropriate
- Monitoring the effectiveness of strategies for preventing bullying behaviour

The Designated Safeguarding Leads (DSL) are: Vicki Welsby, Lauren Mintey, Natasha Green and Natalia Thomas. Safeguarding is the responsibility of all, however all staff, parents/carers and pupils need to be aware of who to report to and how to report any safeguarding concerns.

The nominated Governor with responsibility for Anti-Bullying and Behaviour is Julie Barnard.

What is bullying and how does it differ to relational conflict?

At Porchester Junior School we have adopted the definition of bullying provided by the Anti-Bullying Alliance:

“Bullying is the repetitive, intentional hurting of one person or group by another person or group, where the relationship involves an imbalance of power. Bullying can be physical, verbal, or psychological. It can happen face to face or online.”

We recognise that bullying can take many forms and can affect any child. It is often motivated by prejudice against particular groups (for example on grounds of race & ethnicity, religion & belief, gender identity, sex, sexual orientation, special educational needs, or disabilities, or because a child

is adopted, in care or has caring responsibilities). Bullying can be motivated by actual differences between children, or perceived differences.

However, we also recognise that incidents may occur between pupils, which may not be deemed as 'bullying' but still require support or intervention from trusted adults. These incidents may be referred to as 'relational conflicts' or falling out. Relational conflict differs to bullying in the fact that it is usually between individuals or groups who are relatively similar in power and status (a power balance), and the behaviours or incidents occur occasionally (not repetitive) or occur by accident (not intentional). Usually, following a relational conflict incident, pupils show remorse and there is a general willingness to make things right or to resolve the conflict.

Not all relational conflict or falling out leads to bullying, but our school is aware occasionally some can, and we are mindful that unresolved bad feelings or relationship problems left unaddressed can be the start of a pattern of behaviour in which the intention becomes to cause harm or distress. Although bullying and relational conflicts can take place between individuals, we recognise that it often takes place in front of others (either physically or virtually), pupils who witness these incidents/behaviours are often referred to as 'bystanders'.

Regardless of whether an incident or situation is deemed as 'relational conflict' or 'bullying', our school will address the situation and support the pupils to resolve any negative feelings. Our school will monitor children following an episode of relational conflict to ensure that the situation has been resolved and does not escalate to bullying. Our school will challenge, address, and monitor any incidents of bullying, to ensure that it does not continue and that all pupils feel supported (this will include the target, the alleged perpetrator, any bystanders, and the wider school community).

What does bullying behaviour look like?

At Porchester Junior School we consider the context within which incidents and/or behaviours of concern occur. We will consider the motivations behind the behaviours and will take into account the age and stage of development of the pupils involved. Our focus will always be the safety and welfare of all children involved.

Bullying behaviour may include, but is not limited to:

- Physical – pushing, poking, kicking, hitting, biting, pinching etc.
- Verbal – name calling, sarcasm, spreading rumours, threats, teasing, belittling and gossiping.
- Emotional – isolating others, tormenting, hiding books/belongings, threatening gestures, ridicule, humiliation, intimidating, excluding, manipulation, and coercion.
- Sexual – unwanted physical contact, inappropriate touching, abusive comments, exposure to inappropriate films etc.
- Online / Cyber – posting on social media, sharing photos, sending nasty text messages, social exclusion, posting / sharing socially embarrassing material etc.
- Indirect – can include the exploitation of individuals such as 'false friendships', criminal exploitation, sexual exploitation, and radicalisation.
- Prejudice-related – derogatory and discriminatory language and behaviour including that which is racist, sexist, homophobic, biphobic, transphobic and disablist in nature. This language and behaviour may be directed towards people because of their sex, religion or beliefs, race/ethnicity/nationality; or because they have a learning or physical disability; or because they are lesbian, gay, bisexual, or trans, or are perceived to be, or have a parent/carer, sibling, or friend who is. It may include misogyny or misandry and be sexist in nature. Such language and behaviour are generally used to refer to something or someone as inferior.

There is no hierarchy of bullying, all forms of bullying are taken equally seriously and will be dealt with appropriately. Our school also understands that some behaviour such as 'baiting' or 'false friendships' may constitute as bullying, we will consider the context of all incidents and aim to support all children involved.

Our school understands that banter is an increasingly relevant part of discussions relating to bullying; however, it is important to acknowledge that banter is not inherently bullying, and it can be an important part of social bonding and friendships. At the same time, we know that some bullying in society is passed off as 'just banter', and we know that banter can quickly escalate to inappropriate or harmful exchanges and bullying.

Our school defines 'prosocial banter' as 'playful, typically funny, teasing between friends'. Prosocial banter can occur both online and offline and includes a range of behaviours that may be verbal, physical, or information/message sharing (online). Banter can include some of bullying behaviours set out in this policy document, so it is important to distinguish between shared positive social bonding and inappropriate banter and bullying. School staff will distinguish between banter and bullying by taking careful consideration of the *intention, content and topic* of reported incidents.

Where does bullying take place?

At Porchester we understand that bullying is not confined to the school premises. Bullying can take place outside of school, on the journey to and from school and in the local community. Bullying may also take place online (this is sometimes referred to as cyberbullying).

We will offer support and guidance to pupils, parents/carers and families who have experienced any type of bullying whether this has taken place inside school, outside of school or online. We are committed to working with outside agencies where appropriate to prevent and tackle all forms of bullying.

We anticipate the full support of parents/carers and families during our investigations of reports of bullying or relational conflicts and request that they work in partnership with our school colleagues to help provide all evidence and context to any reported incidents (particularly when alleged incidents have taken place online). We ask that parents/carers remain vigilant about their children's online activities and behaviour online, and work in partnership with the school to educate children about the importance of online safety.

Reporting and responding to bullying

At Porchester we want pupils, parents/carers, staff, and visitors to confidently report bullying and know that their concerns will be taken seriously. We remain committed to supporting and safeguarding all children involved including the target, the alleged perpetrator, any bystanders/witnesses to the bullying behaviour and the wider school community.

We have clear reporting systems for each group of our school community, the effectiveness of these reporting systems is reviewed throughout the academic year and may be expanded to meet the needs of all members of our community.

Pupils, including bystanders/witnesses

We ask that all pupils report concerns of bullying or bullying behaviour to a member of school staff – this can be any member of teaching or non-teaching staff, including a class teacher, a TA, the Head teacher, a lunchtime supervisor, or a member of the office team. We talk about trusted adults regularly in class and in assemblies to remind our pupils of who they can report concerns to.

The member of staff will listen to the pupil and make an initial note of their concerns, they will then discuss next steps with them and reassure them that they will be supported. The member of staff will make a formal record of the bullying report on the school's recording system (CPOMs) and other relevant members of staff will be alerted. The member of staff will directly alert the school's Designated Safeguarding Lead if the report is deemed urgent or if a pupil is considered at risk.

We understand that some pupils may find it difficult to tell a member of staff about their concerns verbally, we therefore have additional reporting mechanisms in place. Our school has a worry box outside the Child and Family Support Worker's room, where the pupil can put their name/a brief note about their concerns/draw a picture of their concern – this worry box is introduced to the pupils at the start of the year and pupils are reminded of them regularly.

Even if the behaviour/incident which has been reported is deemed 'not bullying' and is thought to be 'relational conflict', school staff will still support the pupils involved and help them to resolve any concerns.

Parents/carers

We understand that it can be very difficult for a parent/carer to be concerned or hear that their child has been the target of bullying, has experienced bullying behaviour or is an alleged perpetrator of bullying.

We ask that if parents/carers have concerns about their child experiencing or perpetrating bullying, that they contact a member of school staff. Initially we ask parents/carers to contact their child's class teacher (either in person, by telephone or Class Dojo) to explain their concerns. The class teacher will take an initial note of the concerns but may ask to schedule a meeting to allow for more time to discuss the concerns in detail. Following the report and/or the meeting, the teacher will make a formal record of the bullying report on the school's recording system (CPOMs) and other relevant members of staff will be alerted. The member of staff will directly alert the school's Designated Safeguarding Lead if the report is deemed urgent or if a pupil is considered at risk.

We ask that parents/carers come directly to the school with their concerns rather than discussing them with other members of the school community in person or online. We ask that parents/carers remain vigilant about their child's online and out-of-school activities and that they work in partnership with the school to provide any evidence to allow staff to investigate the matter fully and in a timely manner.

Our school remains committed to supporting pupils and their families in all instances of bullying and relational conflict and will respond to reports promptly. Even if the behaviour/incident which has been reported is deemed 'not bullying' and is thought to be 'relational conflict', school staff will still support the pupils involved and help them to resolve any concerns.

We will endeavour to ensure that all parties are kept informed of progress and any developments, but we will also need to show due regard to GDPR (General Data Protection Regulations). This may mean, at times, that we are not able to provide or share information or updates.

School staff

Our staff work closely with our pupils and therefore may notice a change in a pupil's behaviour or attitude that might indicate that something is wrong before receiving a report from a pupil or a member of the school community. If staff have any concerns about a pupil's welfare or are concerned that a pupil is displaying behaviours that may show they are the target of bullying or perhaps perpetrating bullying, they should act on them immediately rather than wait to be told.

We ask that staff report their concerns directly to the Head teacher and the Anti-Bullying Coordinator. The member of staff receiving the report will take an initial note of the concerns and will then make a formal record of the bullying report on the school's recording system (CPOMs) and other relevant staff members will be alerted. The member of staff must directly alert the school's Designated Safeguarding Lead if the report is deemed urgent or if a pupil is considered at risk.

Visitors

We ensure that all visitors to our school are aware of our Child Protection and Safeguarding procedures and which staff member they should report any concerns to (the member of staff may differ depending on the purpose of the visit e.g., supply teacher, governor, external agency etc.).

We ask that if a visitor to our school has any concerns about bullying behaviour that they have witnessed, or been told about, that they report their concerns at the earliest opportunity in person to the school's Head teacher or a member of the Senior Leadership Team. We ask that visitors report their concerns in person by the end of the school day. For example, it would not be appropriate to wait until the following day or leave a written note with concerns. The member of staff receiving the report will take an initial note of the concerns and will then make a formal record of the bullying report on the school's recording system (CPOMs) and other relevant staff members will be alerted. The member of staff will directly alert the school's Designated Safeguarding Lead if the report is deemed urgent or if a pupil is considered at risk.

How our school will respond to reports of bullying

At Porchester all reports of bullying or reported concerns of bullying behaviours will be taken seriously and investigated. Even if an incident is deemed 'not bullying' or a 'relational conflict', our school remains committed to supporting all pupils who have been involved and effected.

Our school keeps records of all reports of bullying, this information is stored on our school's recording system (CPOMs). These records are used to identify trends and inform our school's preventative work. Information from these records is discussed regularly at staff meetings to ensure that all staff are kept up-to-date and are alert to any ongoing concerns.

Our staff use a contextual approach to safeguarding and each incident will be dealt with on a case-by-case basis. Some of our school's responses may include, but may not be limited to:

- Talk to all pupils involved in the reported incident – this may include the target, child who has allegedly displayed bullying behaviour, and any bystanders/witnesses
- Talk to the parents/carers (of the target and/or the child who has allegedly displayed bullying behaviour). We anticipate the full support from parents/carers and request that they provide staff with all available evidence (particularly when alleged incidents have taken place online).
- Our school will take a restorative and education-based approach in order to address the possible root causes for any bullying behaviours. When appropriate, we will implement appropriate sanctions in accordance with our school's behaviour policy. These sanctions will be graded according to the seriousness of the incident but will send out a message that bullying is unacceptable. We may issue bespoke interventions or next steps of support depending on the circumstances and root causes.
- Discuss the incident with other agencies and organisations when appropriate and make referrals to those organisations when appropriate
- Liaise with the wider community if the bullying is taking place off the school premises (e.g., the Police, District Council etc.)
- Keep in touch with the person who reported the incident to inform them that action has been taken – this may include a pupil, a parent/carer/guardian, a member of staff or visitor, or another member of the school community. We will endeavour to ensure that all parties

are kept informed of progress and any developments, but we will also need to show due regard to GDPR. This may mean, at times, that we are not able to provide or share information or updates.

- Implement a range of follow-up support/interventions appropriate to the situation (this may include informal or formal restorative work with the target and alleged perpetrator, solution-focused meetings, individual or group work with the target, individual or group work with the child who has displayed bullying behaviour, individual or group work with any witnesses/bystanders, group work with the wider-school community etc.)
- Monitor the effectiveness of actions taken and reassess/take more actions if appropriate
- Liaise with the Designated Safeguarding Lead if there are safeguarding issues or concerns and consider the potential impact of the experiences – a DSL may then liaise with other professionals and Local Authority teams as appropriate (e.g. CAMHS, MASH etc.).
- Refer to the Nottinghamshire County Council ‘Pathways to Provision’ document and complete an EHAF if appropriate.

The school prides itself on its response to matters of bullying urging pupils and parents to approach teachers and the headteacher whenever it is necessary.

It has been shown that in the majority of cases a mediating approach in the early stages is successful. Parents are urged to keep the school informed if the situation continues

Stage	Child who has experienced bullying behaviour	Child who has allegedly perpetrated bullying behaviour
Stage 1	Class teacher talks to the pupil to establish what has happened and give reassurance of support.	Class teacher talks to the pupil to establish what has happened and gives support/warning dependent on situation
Further occurrence move to Stage 2	Headteacher and anti-bullying coordinator informed. Matter discussed with pupil individually and where appropriate with pupils concerned. Support provided.	Headteacher and anti-bullying coordinator informed. Matter discussed with pupil individually and where appropriate with pupils concerned.
Further occurrence move to Stage 3	Parents informed and involved. Support provided.	Parents informed and Involved through communication with the Anti-Bullying Co-ordinator.
Further occurrence move to Stage 4	Meeting with parents and headteacher. Support provided.	Meeting with parents and headteacher.

Should the problem continue beyond stage 4, governors, the Trust and outside agencies may become involved and exclusion considered.

If a parent/carer is not satisfied with our school’s actions, we ask that they follow our school’s complaint policy and procedures. This is available online from our school website and on request from the school office.

Strategies for preventing bullying

At Porchester, we are committed to the safety and welfare of our pupils, and therefore we have developed the following strategies to promote friendly and positive behaviours and discourage bullying behaviours. Throughout the academic year, the effectiveness of these strategies is reviewed, and the variety of strategies may be expanded to address specific concerns or meet the needs of all members of our community.

The strategies we use include, but are not limited to:

- Active school council / school parliament with representatives from each year groups
- Wellbeing leadership team
- Taking part in Anti-Bullying week annually (November)
- Taking part in Safer Internet Day annually (February)
- Robust RSHE curriculum for all year groups
- Collaborative work with safeguarding leads, SENCOs and other colleagues and specialists
- Specific curriculum inputs for online safety and cyberbullying
- Drop down days / themed days to promote equality and tackle prejudice
- Opportunities for pupils to share their voice and opinions – through surveys etc.
- Inclusive displays throughout the school with a diverse range of work, photographs etc.
- Inclusive toys and books throughout the school raising awareness of and celebrating differences
- ELSA support / Lego therapy / counselling for identified students
- Specific initiatives for identified individuals or groups
- Parent events
- Regular staff training and development for all staff (including lunchtime supervisors)
- All staff model expected behaviour

Staff are directly responsible for the safety and welfare of the class they are working with and indirectly for all the pupils in the school during teaching times, beginning and end of school and playtimes on a rota basis. They share the responsibility of disciplining pupils when necessary, are involved in the development and implementation of the policy.

Parents are kept informed by the class teacher of less serious incidents of bullying involving their child, whether as the victim or the bully. If the bullying is persistent or of a serious nature the head teacher must be informed and parents contacted.

There is a culture within the school whereby pupils know that it is expected that they should speak to an adult in school about matters that concern them whether it is in relation to themselves or another pupil. They are encouraged to understand that to see someone made unhappy and not to do anything about it is to condone the behaviour.

Breaches / Complaints

Breaches to this policy will be dealt with in the same way that breaches of other school policies are dealt with, as determined by the Head teacher and Governing Body.

If a parent/carer is not satisfied with our school’s actions, we ask that they follow our school’s complaint policy and procedures. This is available online from our school website, and on request from the school office.

Policy	How it may link
Child-on-child Abuse Policy	Includes links to bullying – specifically sexualised bullying and exploitation

Relationships and Behaviour Regulation Policy	Includes details about the rewards and sanctions for pupils
Child Protection Policy	Includes information about child protection procedures and contextualised safeguarding
Online Safety and Acceptable Use Policies	Includes information about children's online behaviour and details about online bullying/cyberbullying
Equalities Policy	Includes information about our school's approach to tackling prejudice and celebrating differences. Links to prejudice-related language and crime and the protected characteristics
RSHE / PSHE Policy	Includes information about our school's RSHE programme and how we teach about relationships, friendships, and bullying
Complaints Policy	Includes information about how to make a complaint if you are not satisfied with the school's response

Monitoring and Review

This policy is reviewed and evaluated throughout the academic year. It is updated annually.

Date approved by the Governing Body: September 2025

Date to be reviewed: September 2026